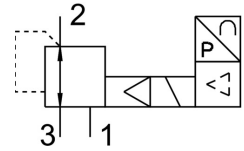


# Proportional pressure control valve VPPX-8L-L-1-G14-0L10H-S1

FESTO

Part number: 570969



## Data sheet

| Feature                                    | Value   |
|--|---|
| Nominal width pressurization               | 8 mm  |
| Exhaust nominal width                      | 7 mm  |
| Type code                                  | VPPX  |
| Actuation type                             | Electrical  |
| Sealing principle                          | Soft  |
| Mounting position                          | Any   |
| Structural design                          | Pilot-controlled diaphragm regulator  |
| Short-circuit protection                   | For all electrical connections  |
| Safety instructions                        | VPPX safety position: if the supply cable breaks, the outlet pressure is maintained in uncontrolled form. |
| Symbol                                     | 00995303  |
| Reverse polarity protection                | for all electrical connections  |
| Reset method                               | Mechanical spring   |
| Type of control                            | Pilot-controlled  |
| Valve function                             | 3-way proportional pressure control valve   |
| Display type                               | LED   |
| Pressure regulation range                  | 0.1 bar ... 10 bar  |
| Inlet pressure 1                           | 0 bar ... 11 bar  |
| Max. pressure hysteresis                   | 0.05 bar  |
| Standard nominal flow rate                 | 2750 l/min  |
| DC operating voltage range                 | 21.6 V ... 26.4 V   |
| Max. current consumption                   | 300 mA  |
| Duty cycle                                 | 100%  |
| Max. electrical power consumption          | 7 W   |
| Residual ripple                            | 10 %  |
| Analog output signal range                 | 0 - 10 V<br>0 - 20 mA<br>4 - 20 mA  |
| Analog input signal range                  | 0 - 10 V<br>4 - 20 mA<br>0 - 20 mA  |
| Operating medium                           | Compressed air as per ISO 8573-1:2010 [7:4:4]<br>Inert gas  |
| Information on operating and pilot media   | Operation with oil lubrication not possible   |
| Certification                              | RCM compliance mark<br>c UL us - Listed (OL)  |
| KC characters                              | KC EMC  |
| CE marking (see declaration of conformity) | As per EU EMC directive   |

| Feature                          | Value  |
|----------------------------------|--|
| Corrosion resistance class (CRC) | 2 - Moderate corrosion stress                        |
| Temperature of medium            | 10 °C ... 50 °C                                      |
| Degree of protection             | IP65   |
| Ambient temperature              | 0 °C ... 60 °C                                       |
| Product weight                   | 560 g  |
| Linearity error FS               | 1 %  |
| Temperature coefficient          | 0.04 %/K   |
| Repetition accuracy FS           | 0.5 %  |
| Repetition accuracy in ± %FS     | 0.5 %FS  |
| Electrical connection            | 8-pin<br>M12<br>Plug                                 |
| Type of mounting                 | Optionally:<br>With through-hole<br>With accessories |
| Pneumatic connection 1           | G1/4   |
| Pneumatic connection 2           | G1/4   |
| Pneumatic connection 3           | G1/4   |
| Note on materials                | RoHS-compliant                                       |
| Housing material                 | Wrought aluminum alloy<br>Anodized                   |